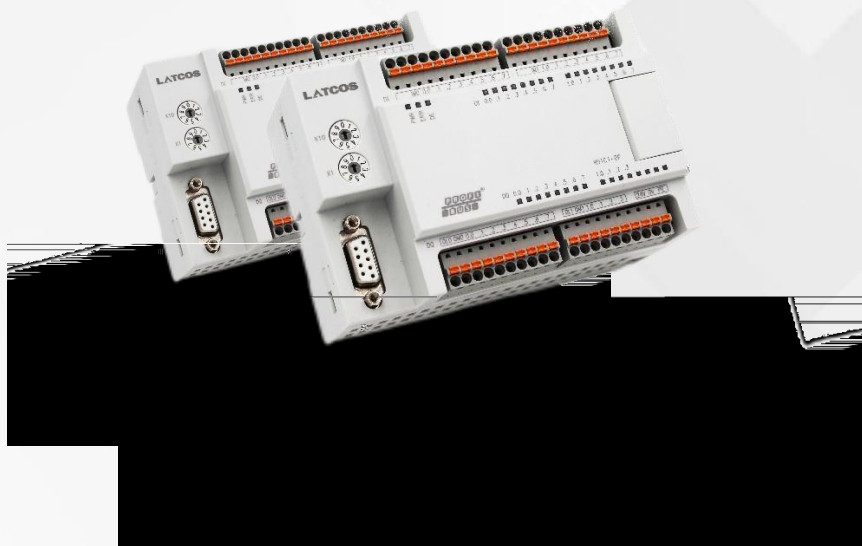




User Manual



PRO FIBUS-DP
Remote IO
IO



PROFIBUS® CIA

IP20

V1.1	2015.07.01	
V1.12	2015.08.01	
V2.01	2016.02.01	R51C1-DP/Pro IO

IEC 11631-2:2007 Programmable controllers –Part 2:Equipment requirements and tests

IEC/TR 61158

-



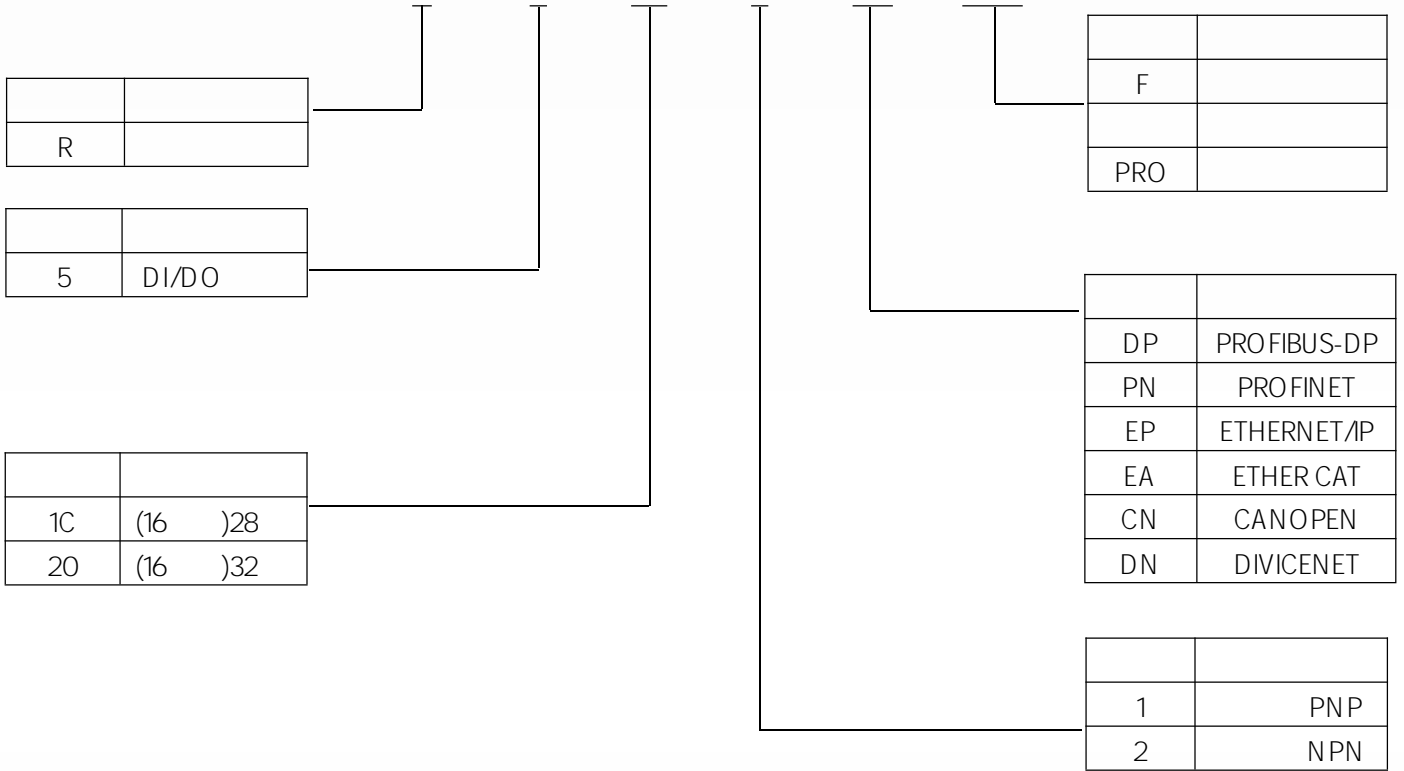
Rx-DP

I/O

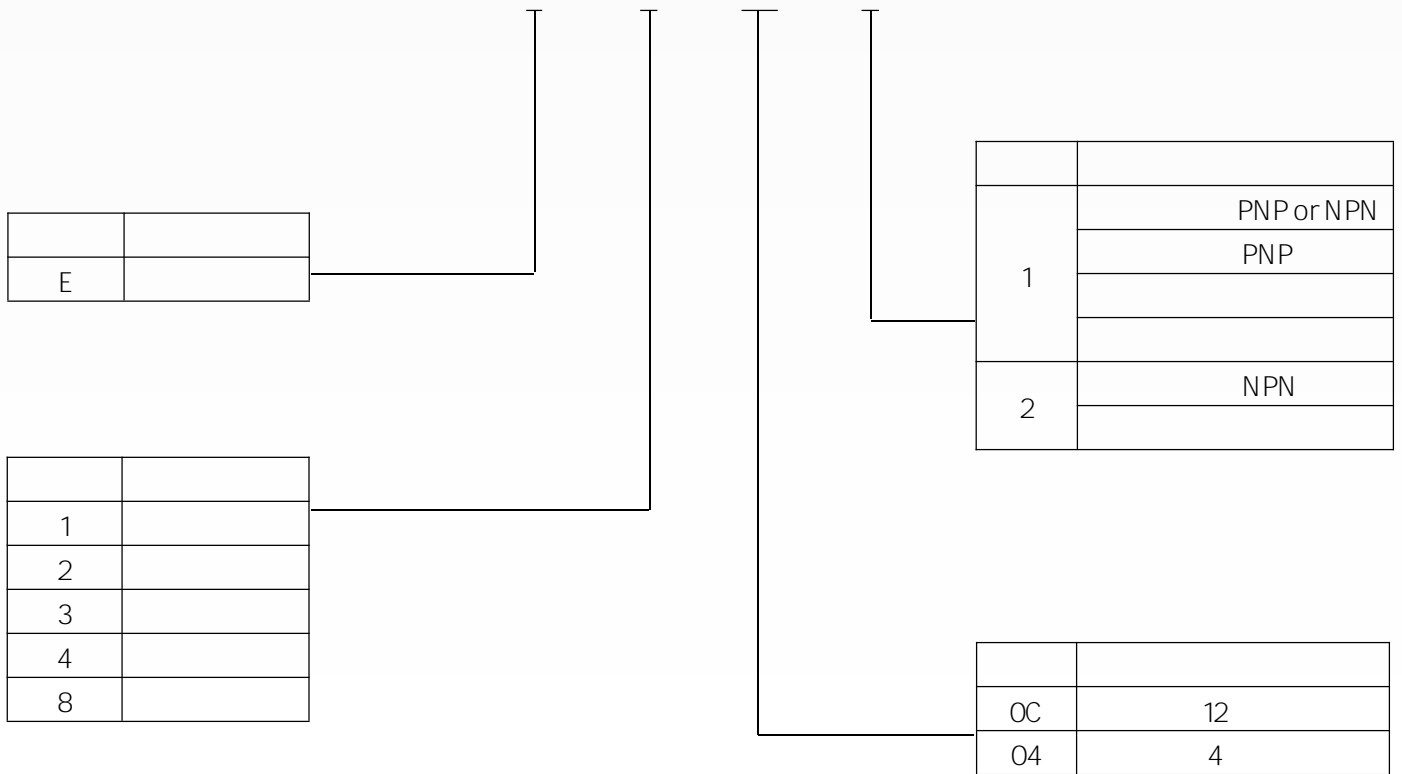
Profibus-DP V0

Profibus

IO



1	R51C1-DP/F	16DI/12DQ	IO	Profibus-DP V0	I/O
2	R51C1-DP/Pro	16DI/12DQ		Profibus-DP V0	I/O



1	E10C1	12DI /
2	E20C1	12DQ
3	E3041	12BIT 4
4	E4041	12BIT 4
5	E8041	12BIT 4
6	E8042	12BIT 4

*

R51C1-DP(-F) R51C1-DP(-Pro)

Profibus-DP		5
1		Profibus-DP V0 IEC 61158 Type3
2		DB9
3	kbps	9.6, 19.2, 45.45, 93.75, 187.5, 500, 1500, 3000, 6000,12 000
4		RS485 NRZ HD=4 /
5		01~ 99
6		2
7		32 126
8		15kV 8kV IEC61000-4-2

R51C1-DP(-F)	R51C1-DP(-Pro)
1	DC 5V
2	1.5A
3	7

3 MOSFET

3

24V DC (-15 %/+ 20 %) 0.5A

I/O 500V DC

. 24V DC (-15 %/+ 20 %) 16*10mA I/O

500V DC

.MOSFET 24V DC (-15 %/+ 20 %) 8*0.5A

I/O 500V DC

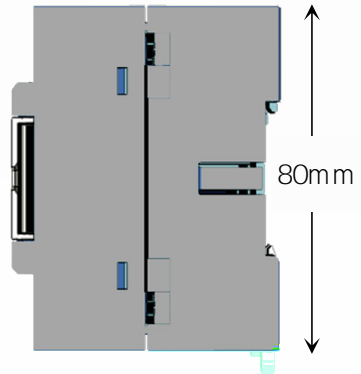
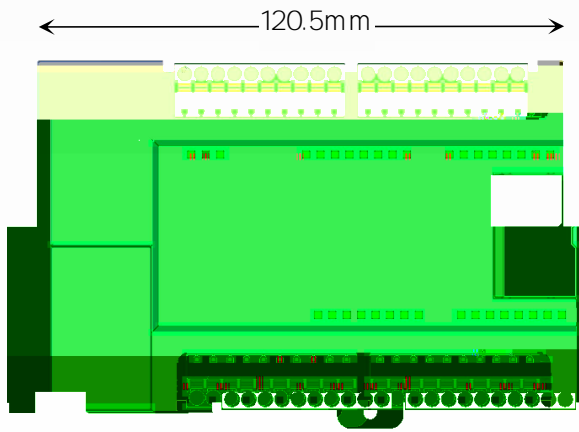
Rx

I/O

120.5 * 80 * 62 W/H/D mm

h=5.5mm

IP20



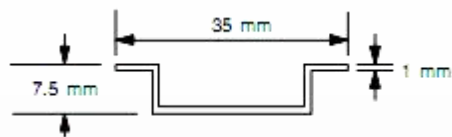
25 mm

75 mm

DIN

TS35/7.5

2



LED

2

I/O

3

LED

8

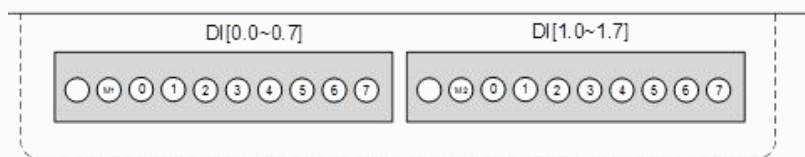
		LED	
PWR		24V	
	ON		
	OFF		
ERR			
	ON	Profibus-DP watchdog	
	OFF	Profibus-DP	
DE			
	ON	operate	
	OFF	operate	

"1" / / LED / "0"

10P

16

DI-0 DI-1



M1 ^(*)	DI 1	M2 ^(*)	DI 2
0	DI-0.0	0	DI-1.0
1	DI-0.1	1	DI-1.1
2	DI-0.2	2	DI-1.2
3	DI-0.3	3	DI-1.3
4	DI-0.4	4	DI-1.4
5	DI-0.5	5	DI-1.5
6	DI-0.6	6	DI-1.6
7	DI-0.7	7	DI-1.7

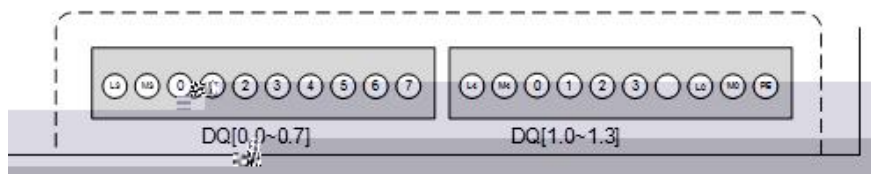
* M1 M2

10P

12

16P

0.5A



L3 ^(*)	DQ	L4 ^(*)	DQ
M3 ^(*)	DQ	M4 ^(*)	DQ
0	DQ-0.0	0	DQ-0.0
1	DQ -0.1	1	DQ -0.1
2	DQ -0.2	2	DQ -0.2
3	DQ -0.3	3	DQ -0.3
4	DQ -0.4		
5	DQ -0.5	L0	4.4
6	DQ -0.6	M0	
7	DQ -0.7	PE	

* L3/M3 L4/M4

DQ

24V



Rx-DP I/O Profibus-DP V0 /
I/O

R51C1-DP-F DI/DQ 6
16 2 In
12 2 Out

S...	DP ID ...	Order Number / Designation	I Add...	Q Address	Comment
1	16DI	16 DI, 2 Byte In	0...1		
2	16DO	12 DO, 2 Byte Out		0...1	

R51C1-DP-F 6.1

Profibus-DP 3



12DQ

"0"



DE

12DQ

"0"



DE

DI

DQ

watchdog

ER

operate

ER

3s

Profibus-DP
ASCII

GSD

GSD

R51C1-DP-F	GSD	R51C1V1.GSD	
"R51C1"		R51C1-DP 16DI/12DO (MOSFET)	IO
"V1"	1	R51C1-DP-F	

Vendor_Name= "LATCOS Automation"
Model_Name= "Remote 16DI/12DO V1"
OrderNumber= "R51C1-DP-F"
Revision = "V1.0"
Ident_Number= 0x00A0

.....

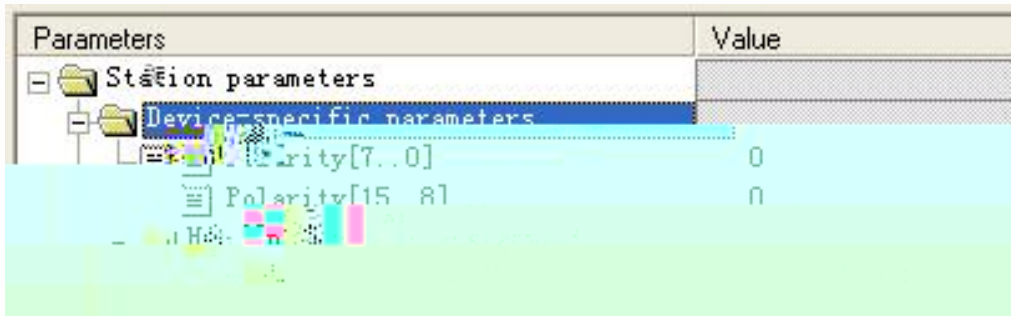
Slave_Family= 3@ RemotelO ;3- "IO"



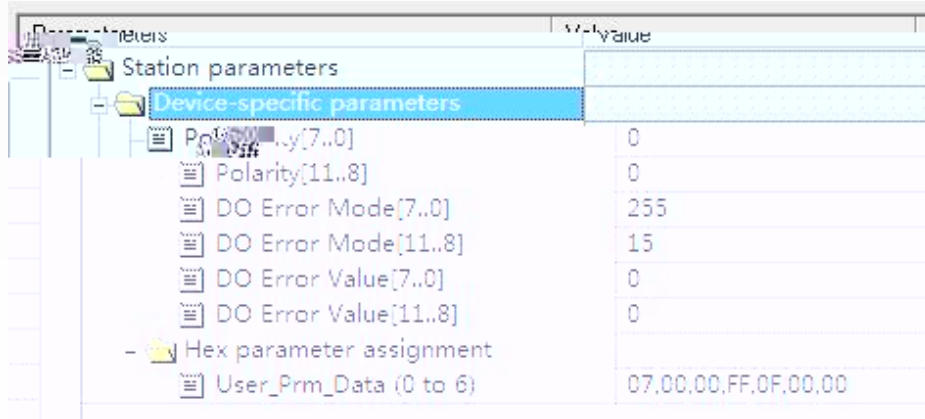
STEP 7

6

2



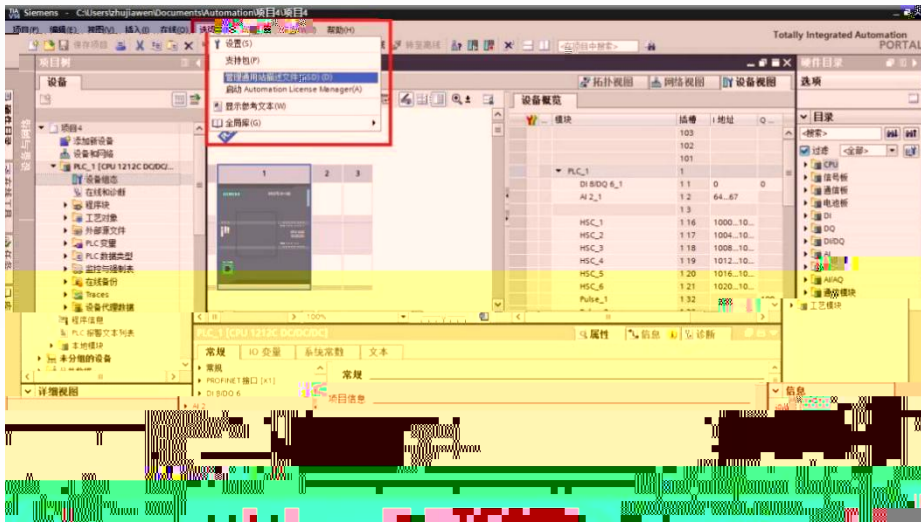
Polarity[7..0]	DI[7..0]		0~255	Bit0 DI-0.0 bit "0" "1"
Polarity[15..8]	DI[15..8]		0~255	Polarity[7..0] "4" 0000 0100B "DI-0.2"



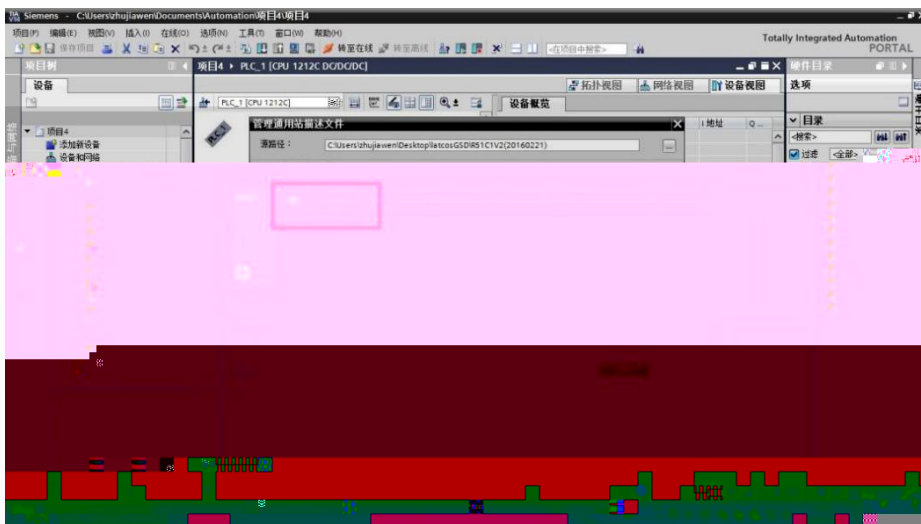
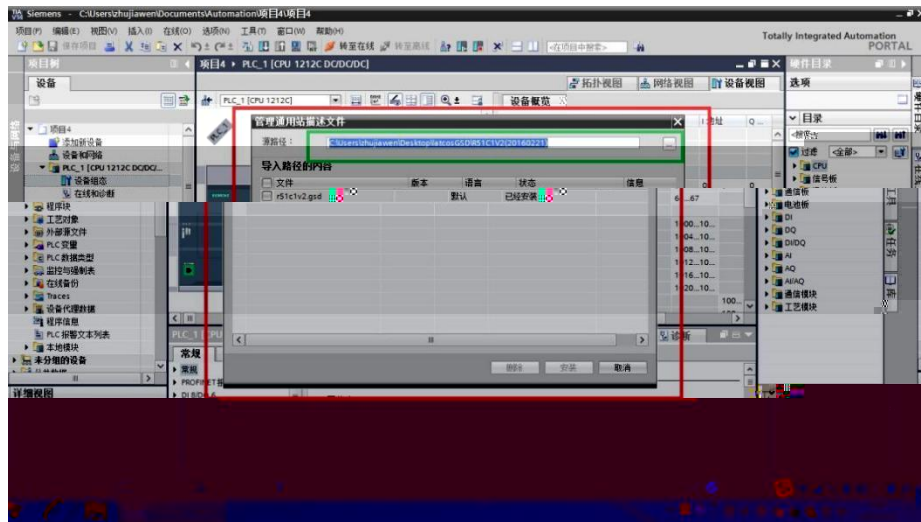
Polarity[7..0] Polarity[11..8]			0~ 255	DQ0.x Bit0 DQ -0.0 bit "0" "1" Polarity[7..0] "4" 0000 0100B "DQ -0.2"
Error Mode[7..0] Error Mode[11..8]			0~ 255	DQ0.x bit DQ0.x Bit0 DQ -0.0 "Error Mode" bit "1" "Error Value[7..0]" bit DQ0.x
Error Value[7..0] Error Value[11..8]			0~ 255	"Error Mode[7..0]" bit DQ

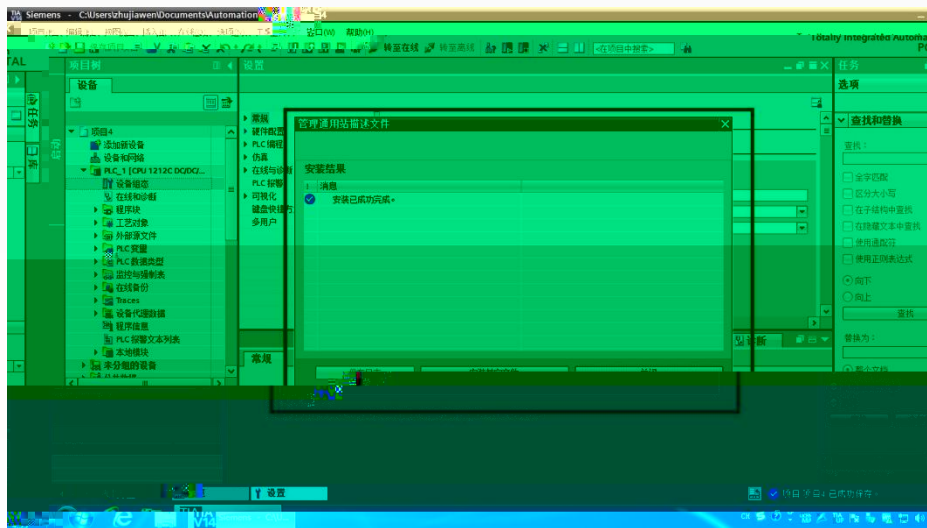


GSD



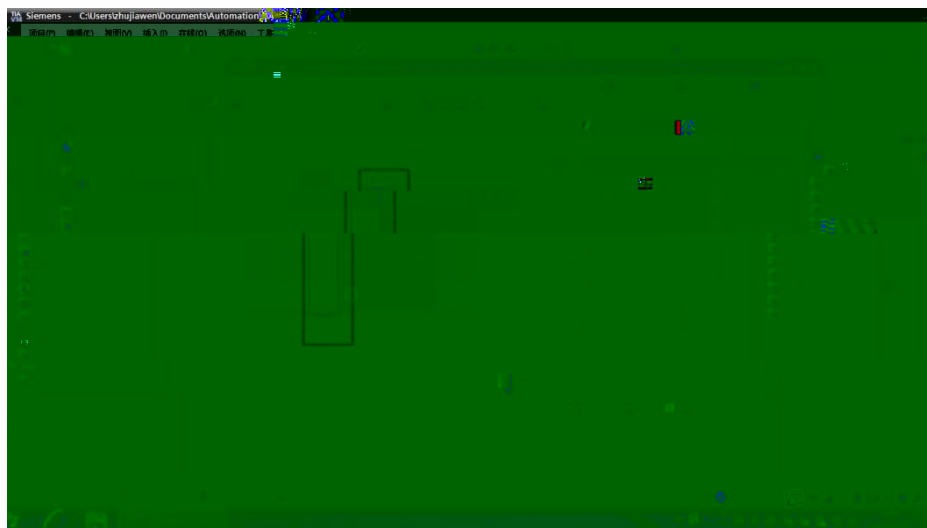
GSD



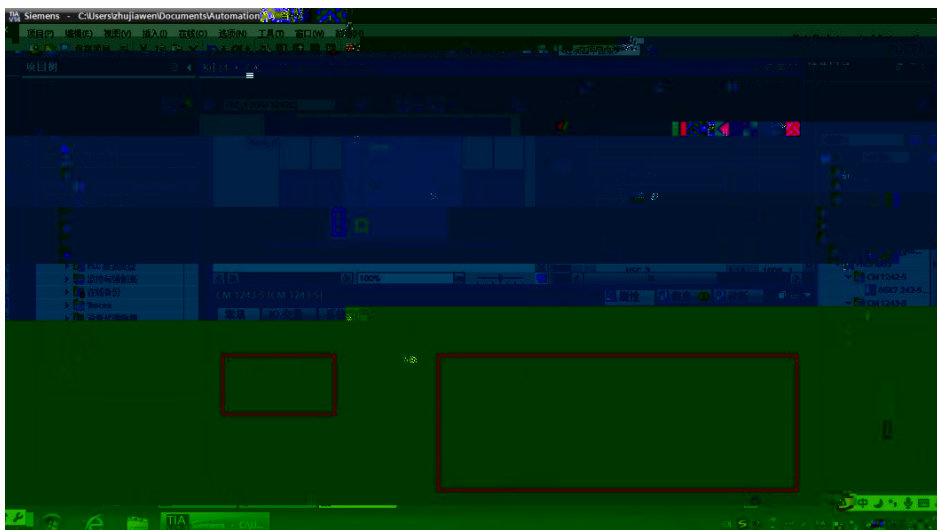


7-1200

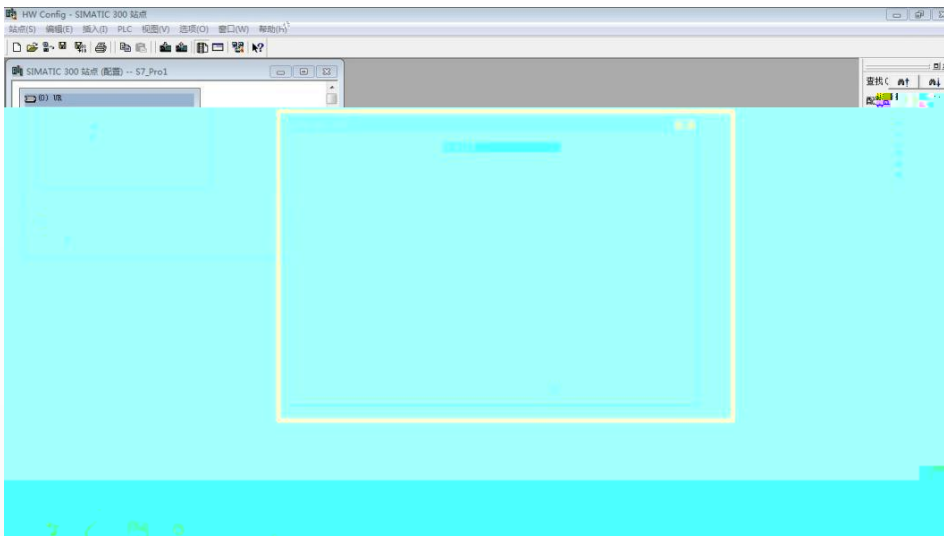
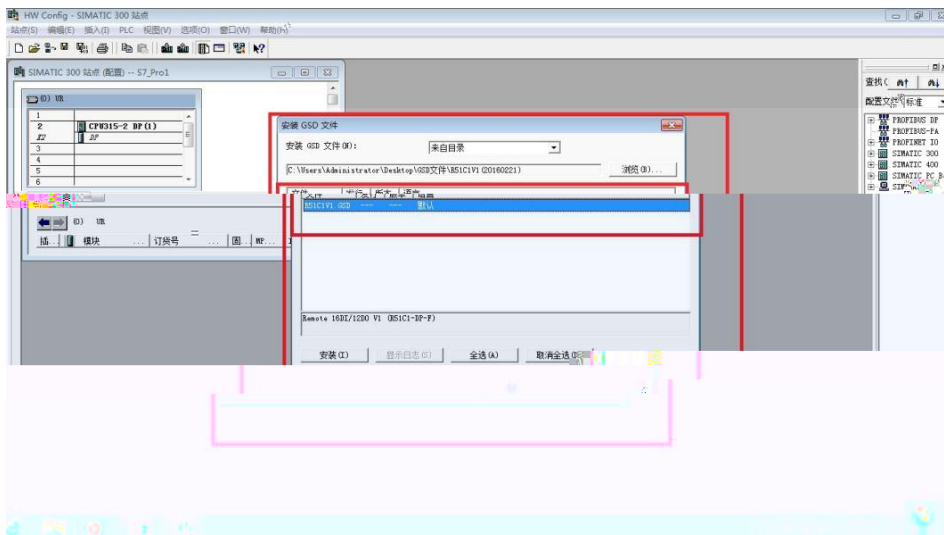
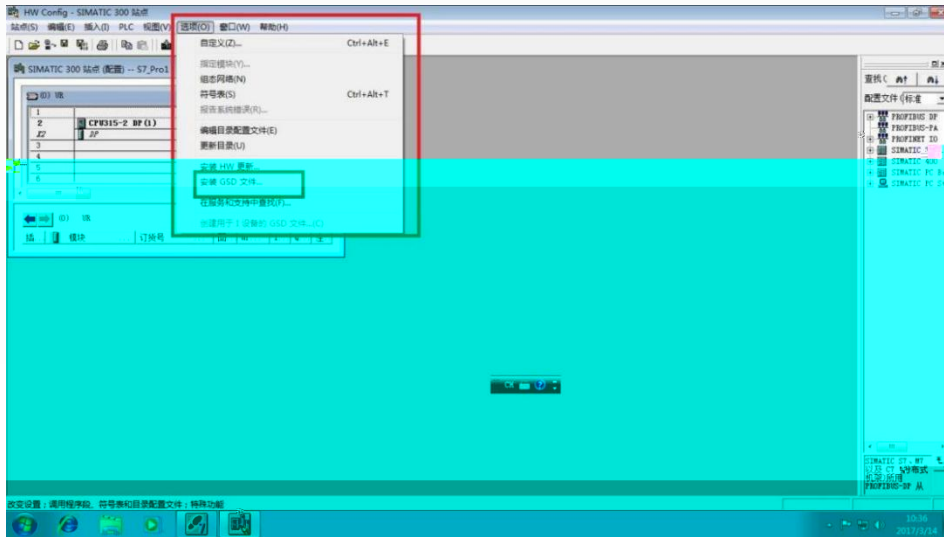
DP

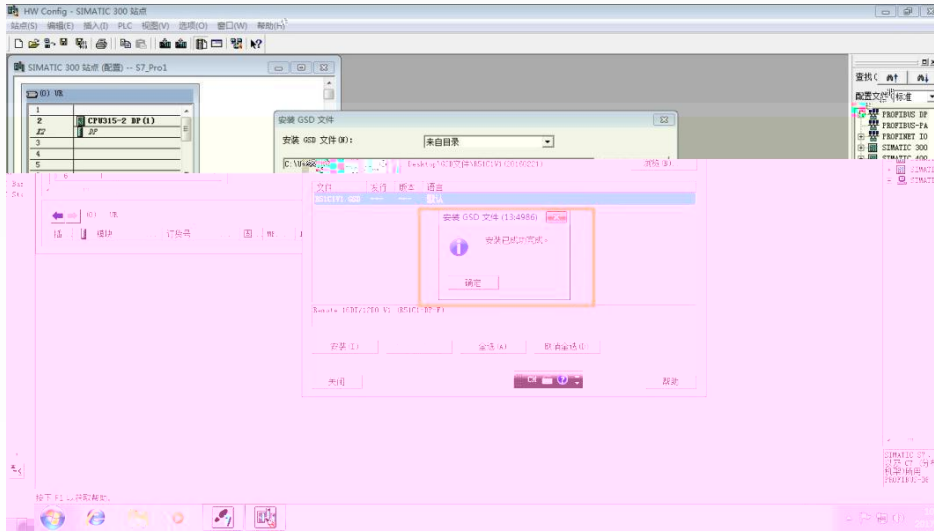


PROFIBUS



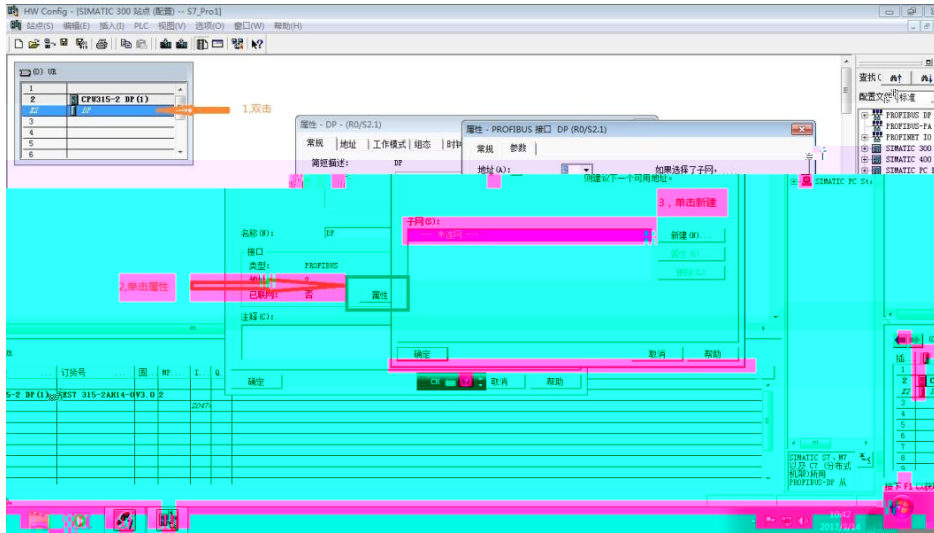
GSD "



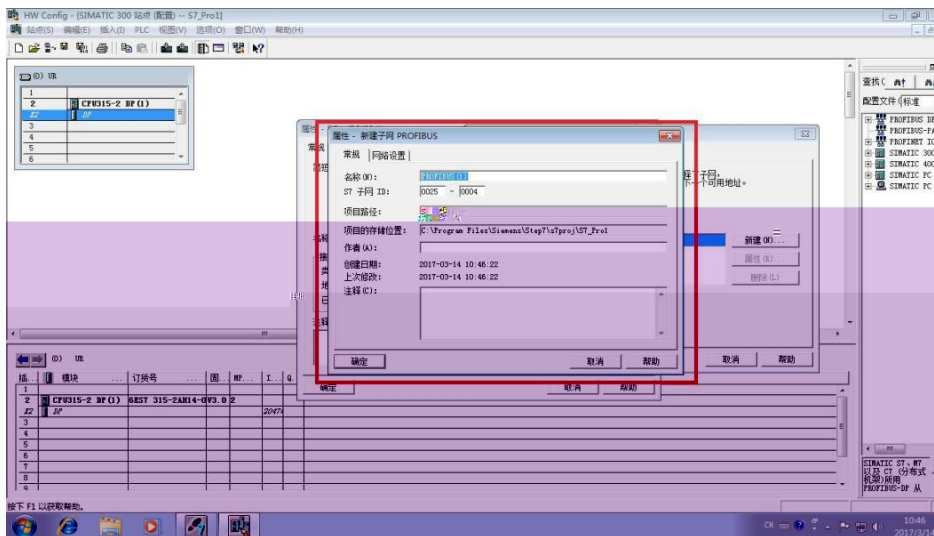


315-2DP

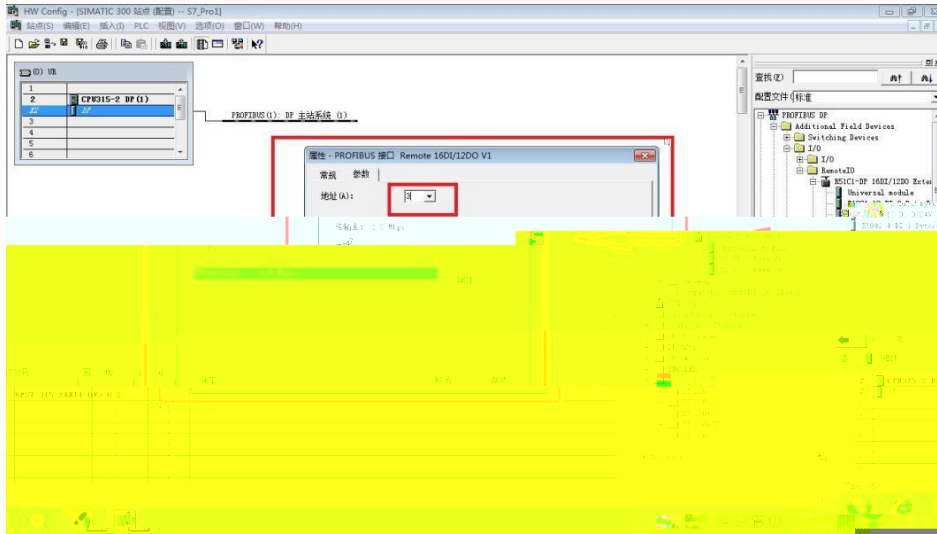
PROFIBUS



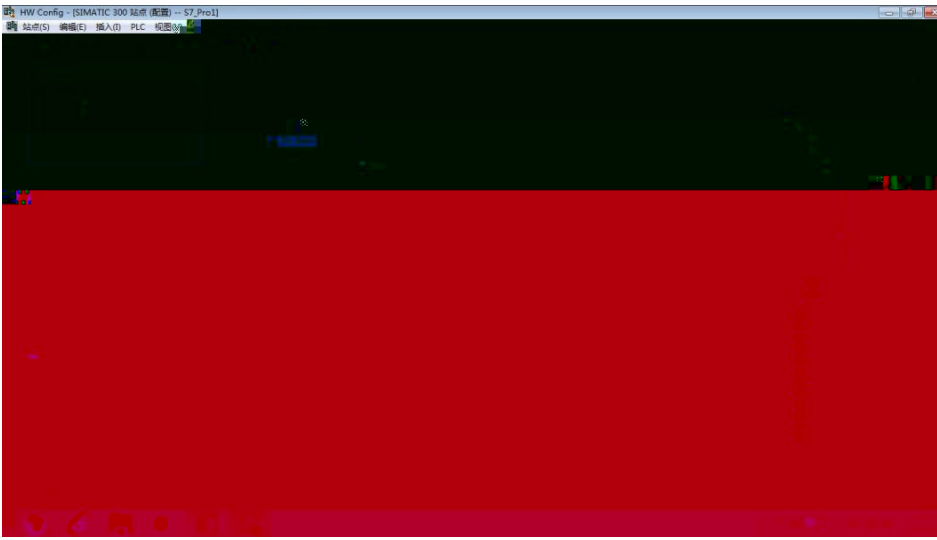
PROFIBUS



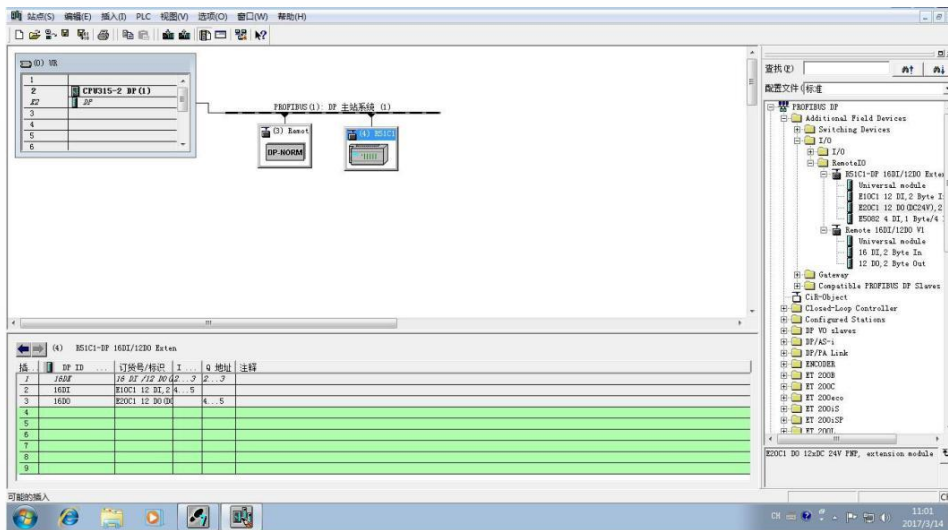
RX-PRO RX-F



R51C1-F



R51C1-DP-PRO



插	DP ID	订货号/标识	I...	Q 地址	注释
1	160E	R51C1 12 DP, 2	4	5	
2	160E	R51C1 12 DP, 2	4	5	
3	160E	R51C1 12 DP, 2	4	5	
4					
5					
6					
7					
8					
9					

